



Bone-Cutter



Parts ID Manual

Model Number: BC-100/A

Revision: C

© Copyright 2025 by DEMTECH Services, Inc.

All Rights Reserved

Scope of Manual:

This manual contains procedures for safety, general unpacking, set-up, and operation of your DEMTECH Services, Inc. Bone-Cutter.

The text of this publication, or any part thereof, may not be reproduced or transmitted in any form or by any means, electronic or mechanical, including photocopying, recording, storage in an information retrieval system, or otherwise, without prior written permission of DEMTECH Services, Inc.

Notice

Patents have been granted and/or patent applications are pending or are in the process of preparation on all DEMTECH Services, Inc. developments.

The material in the manual is for informational purposes only and is subject to change without notice.

DEMTECH Services, Inc. assumes no responsibility for any errors that may appear in this manual.

Manual Number: **BC-PARTS ID MANUAL, Revision: C**

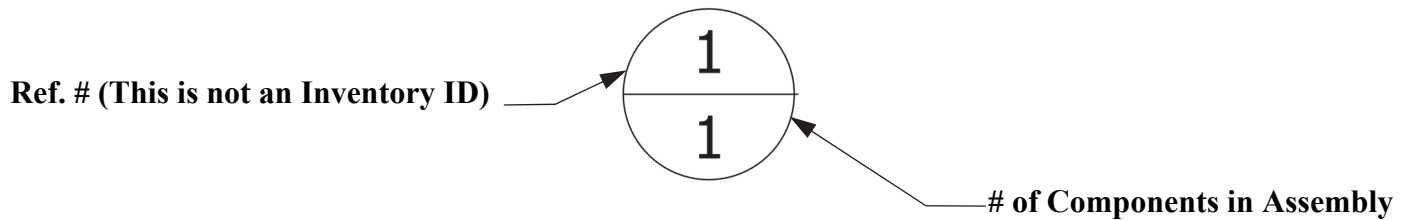
DEMTECH Services, Inc.
6414 Capitol Avenue Diamond Springs, CA 95619 U.S.A.
Telephone: (530) 621-3200
Toll Free: (888) 324-9353
Fax: (530) 621-0150
Web Site: www.demtech.com

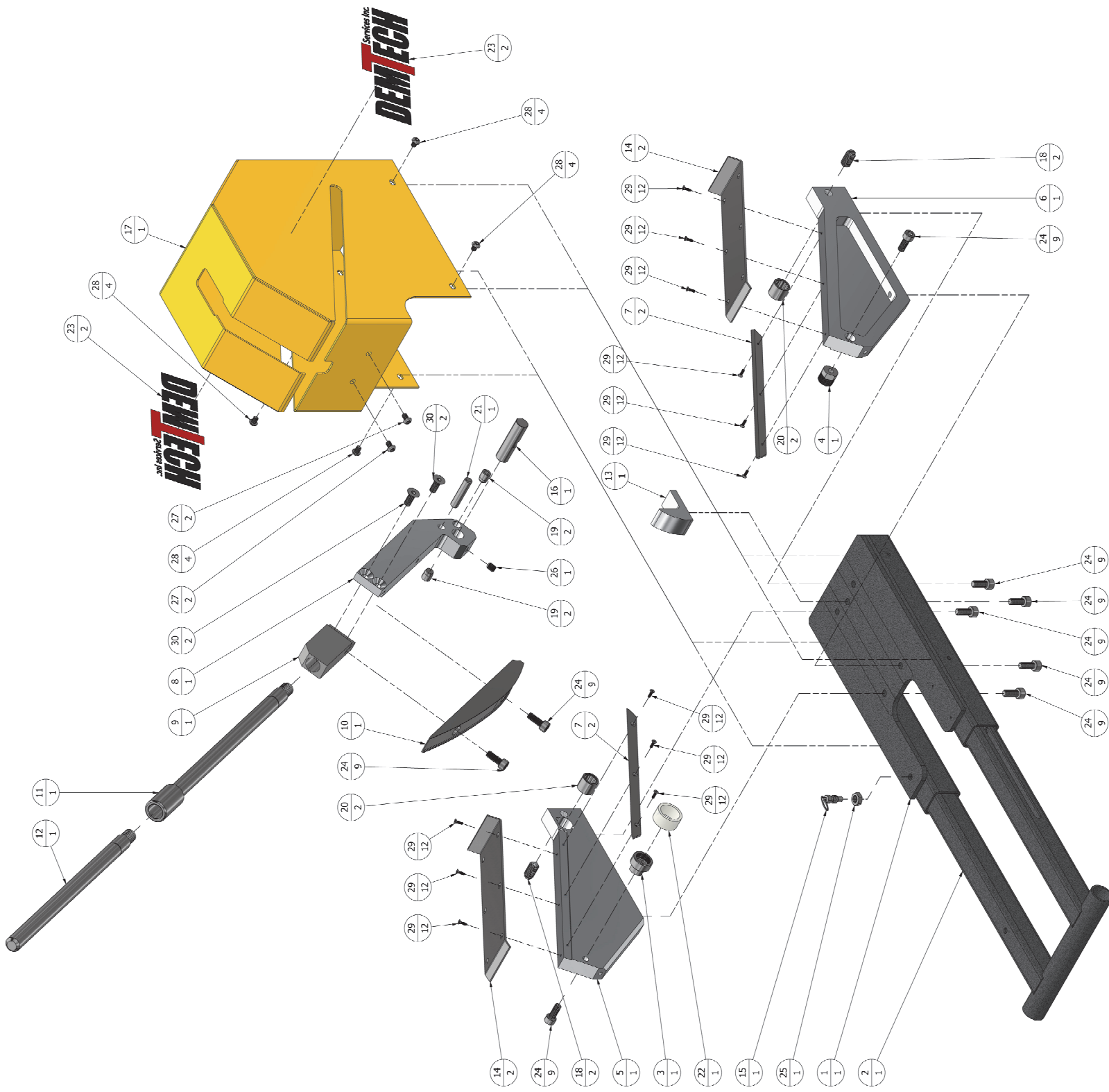
TABLE OF CONTENTS

1	ORDER INSTRUCTIONS.....	PAGE 1
1.1	BC-100/A – ASSY, BONE-CUTTER (Parts ID).....	Page 2
1.2	BC-100/A – ASSY, BONE-CUTTER (Parts List).....	Page 3

1 Order Instructions

Refer to the diagrams and related parts lists on the following pages to identify replacement parts for the Bone-Cutter. To locate a part, find it visually on the exploded assembly diagram and note its Reference Number. Next refer to the assembly's parts list to identify the corresponding Inventory ID using the Reference Number. When ordering parts, be sure to specify the INVENTORY ID number, not the Reference Number. '*NS-Hardware*' refers to non-stock items, these parts are still available for order, please provide the part description to order NS-Hardware items.





1.1 BC-100/A – ASSY, BONE-CUTTER (Parts ID)

PARTS LIST			
ITEM NO	INVENTORY ID	[ALTERNATE-ID] DESCRIPTION	QTY
1	BC-72097	[BC-002] Base, Bone-Cutter	1
2	BC-72100	[BC-003] Leg, Extendable Handle	1
3	BC-72103	[BC-004] Nut, Blade Standoff	1
4	BC-72105	[BC-005] Screw, Blade Standoff	1
5	BC-72107	[BC-006] Standoff, Blade Insert, Left	1
6	BC-72109	[BC-007] Standoff, Blade Insert, Right	1
7	BC-72111	[BC-008] Blade, Bone-Cutter, Insert	2
8	BC-72113	[BC-009A] Holder, Ram Insert, Pivot (2 piece)	1
9	BC-72115	[BC-009B] Mount, Ram Insert, Handle (2 piece)	1
10	BC-72118	[BC-010] Ram, Bone-Cutter, Insert	1
11	BC-72120	[BC-011A] Handle, Ram Pivot Holder, Coarse (Male, Female Ends)	1
12	BC-72123	[BC-012A] Handle, Extension, Coarse (Male End)	1
13	BC-72125	[BC-013] Bracket, Seam Sample, Guide	1
14	BC-72127	[BC-014] Tray, Sample Strip, Guide	2
15	BC-72128	[BC-015] Lock Pin, Spring, Extendable Handle	1
16	BC-72129	[BC-016] Shaft, Ram Insert, Pivot	1
17	BC-72131	[BC-017] Cover, Bone-Cutter, Outside, Complete w/Powder Coating	1
18	BC-72135	[BC-018] Plunger, Ball	2
19	BC-72136	[BC-019] Button, Spring Plunger, Detent	2
20	BC-72137	[BC-020] Bearing, Needle Roller	2
21	BC-72138	[BC-022] Pin, Dowel, Travel Limit	1
22	BC-72141	[BC-025] Protective Cover, Adjustment Nut, Handle Bumper	1
23	DT-72336	[Label-DemTech] Label - DemTech Logo, Black w/Red "T"	2
24	NS-HARDWARE	SCREW, M8 X 1.25 X 20mm LONG, SOCKET HEAD CAP, 18-8 STAINLESS STEEL	9
25	NS-HARDWARE	NUT, 3/8"-16 HEX, THIN-PROFILE, 18-8 STAINLESS STEEL	1
26	NS-HARDWARE	SCREW, SET, M8 X 1.25 X 10mm LONG, ALLEN SOCKET CUP POINT, 18-8 STAINLESS STEEL	1
27	NS-HARDWARE	SCREW, M6 X 1 X 10mm LONG, BUTTON HEAD CAP, 18-8 STAINLESS STEEL	2
28	NS-HARDWARE	SCREW, M6 X 1 X 8mm LONG, BUTTON HEAD SOCKET CAP, 18-8 STAINLESS STEEL	4
28	*BC-017-CS*	*SCREW, M6 X 1 X 5mm LONG, BUTTON HEAD SOCKET CAP, 18-8 STAINLESS STEEL*	4
29	NS-HARDWARE	SCREW, M3 X 0.5 X 10mm LONG, FLAT HEAD SOCKET CAP, 18-8 STAINLESS STEEL	12
30	NS-HARDWARE	SCREW, M8 X 1.25 X 20mm LONG, FLAT HEAD SOCKET CAP, 18-8 STAINLESS STEEL	2

For older bone cutters, call DemTech Service and Repairs for verification

1.2 BC-100/A – ASSY, BONE-CUTTER (Parts List)